



**Office Space**  
2393 Coon Rapids Blvd.  
Coon Rapids, MN

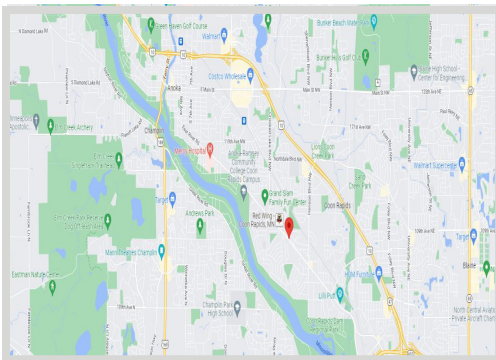
**FOR LEASE**  
**1,840 SF - 3,680 SF OFFICE SPACE**



**FEATURES:**

- 1,840 SF - 3,680 SF Office Space available to lease in Coon Rapids, MN.
- Located on high traffic area with numerous businesses nearby.
- Two story building with multiple offices.
- Main Level includes 2 large offices along with 3 smaller offices.
- Upper Level includes 2 large offices and 3 offices.

**Lease Rate:**  
**NEGOTIABLE**



- ▲ High Traffic area with 20,700 VPD.
- ▲ Main Level is ADA compliant.
- ▲ Both Level have mens & womens bathroom.
- ▲ Strong population growth in area!

Overview. ....	1
Maps. ....	2
Site Plan ....	3
Floor Plan ....	4



**Chad Weeks**  
612.619.9911  
cweeks@arrowcos.com



**Jeff Penfield**  
612.325.2067  
jpenfield@arrowcos.com

**Contact**

Phone: 763.424.6355  
Fax: 763.424.7980

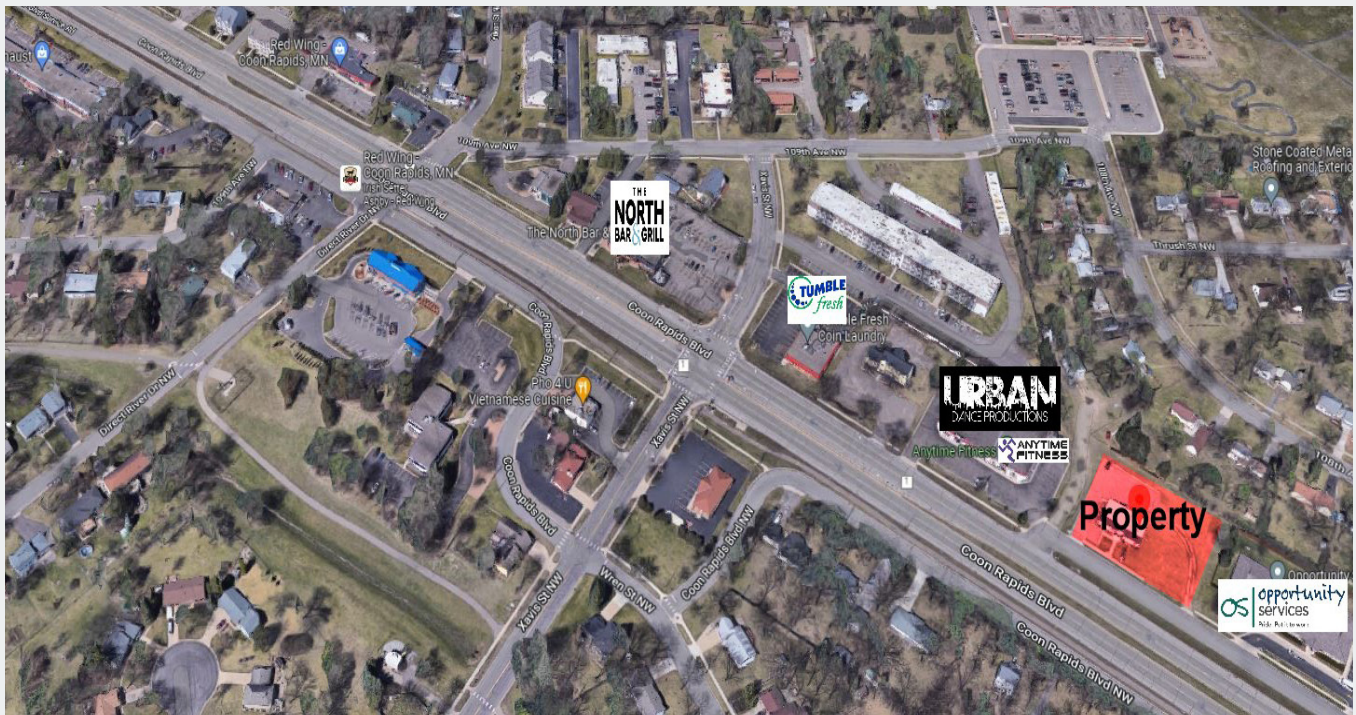
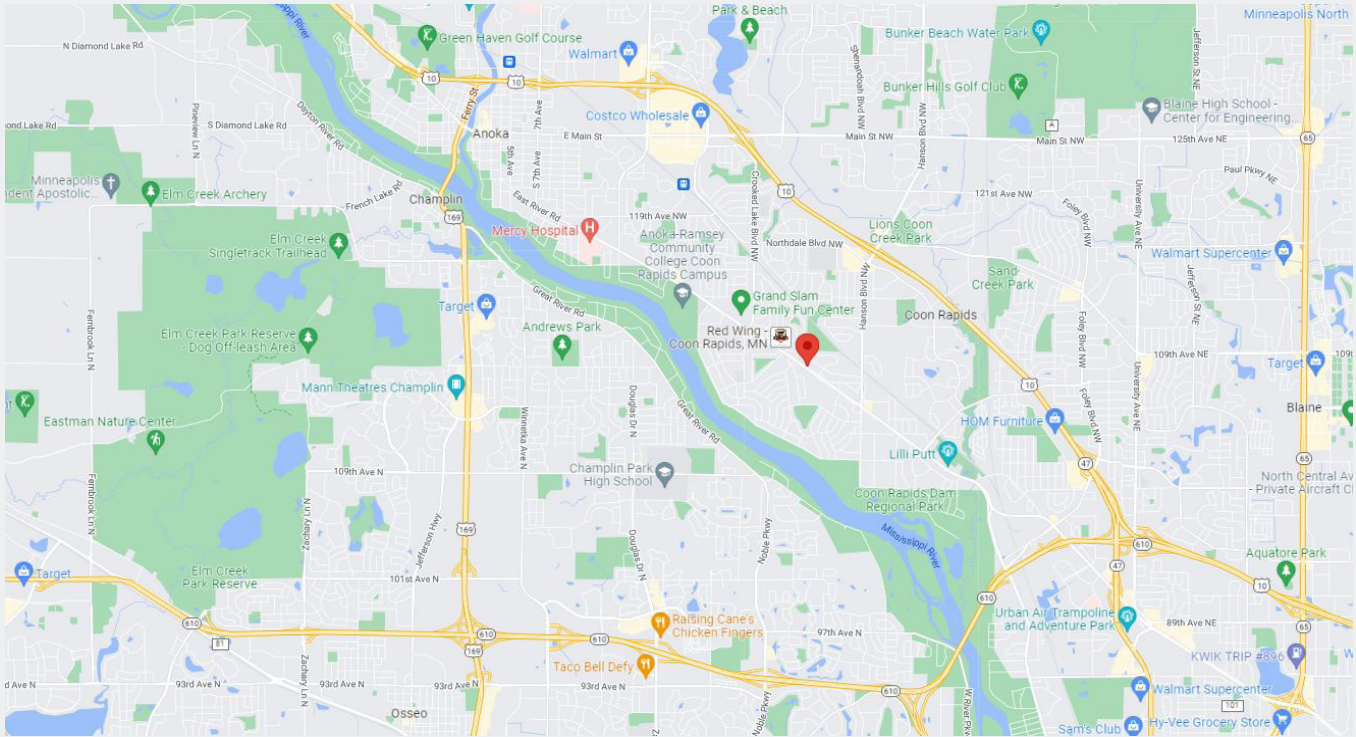
**Arrow Companies**  
7365 Kirkwood Court N. Suite 335  
Maple Grove, MN 55369

[www.arrowcos.com](http://www.arrowcos.com)



**MAPS**

**FOR LEASE**  
**1,840 SF - 3,680 SF OFFICE SPACE**



**Contact**

Phone: 763.424.6355  
Fax: 763.424.7980

**Arrow Companies**

7365 Kirkwood Court N. Suite 335  
Maple Grove, MN 55369

[www.arrowcos.com](http://www.arrowcos.com)



**SITE PLAN**

**FOR LEASE**  
**1,840 SF - 3,680 SF OFFICE SPACE**



**Contact**

Phone: 763.424.6355  
Fax: 763.424.7980

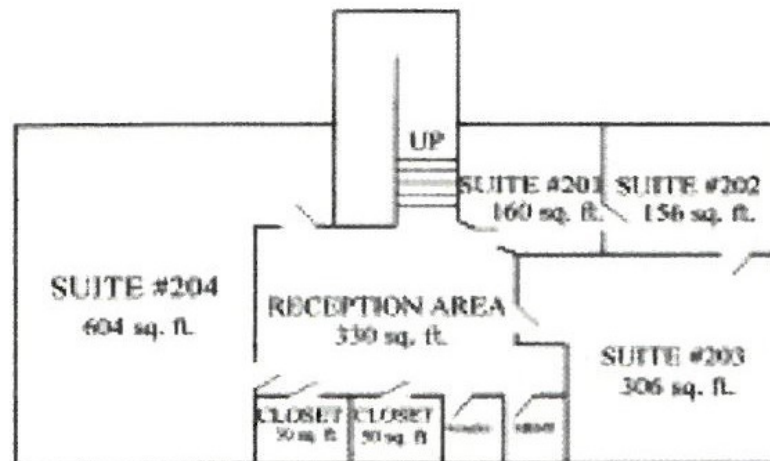
**Arrow Companies**

7365 Kirkwood Court N. Suite 335  
Maple Grove, MN 55369

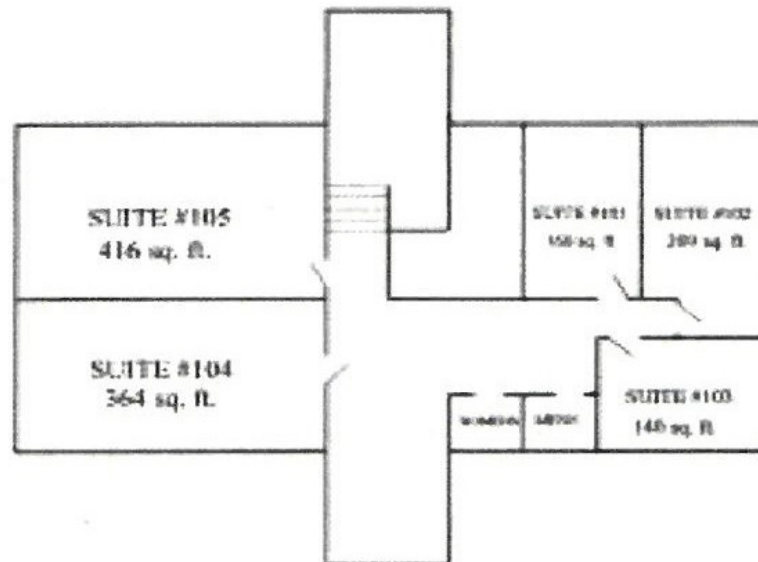
[www.arrowcos.com](http://www.arrowcos.com)

**FLOOR PLAN**

**FOR LEASE**  
**1,840 SF - 3,680 SF OFFICE SPACE**



**SECOND FLOOR**



**FIRST FLOOR**

**Contact**

Phone: 763.424.6355  
Fax: 763.424.7980

**Arrow Companies**

7365 Kirkwood Court N. Suite 335  
Maple Grove, MN 55369

[www.arrowcos.com](http://www.arrowcos.com)