



Blaine 21
9380 Central Ave NE
Blaine, MN 55014

FOR LEASE - Beautiful Office Space!



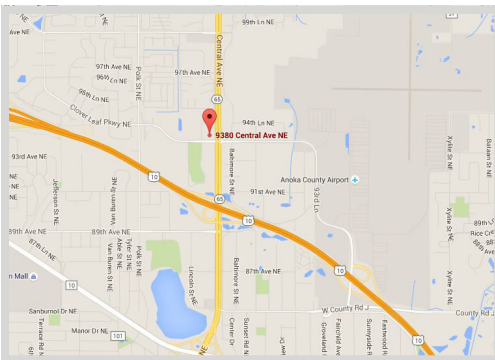
FEATURES:

- High visibility from Hwy 65 with easy access to Hwy 610 & I-35W
- Monument signage available
- Electronic security access to building
- Break room & vending on site (2nd floor)

Lease Rate

\$7.95/psf NNN

Tax: \$4.81/psf & Cam: \$7.32/psf



Availability:

Suite 260 - Available w/ 60-day notice

- ▲ 4,082 SF (Min. Divisible 1,800 SF)
- ▲ Reception Area
- ▲ 4 offices
- ▲ Conference Room
- ▲ Open Work Area

Overview	1
Aerial Maps	2
Floor Plan	3
Outside Gallery	4



Chad Weeks
612.619.9911
cweeks@arrowcos.com



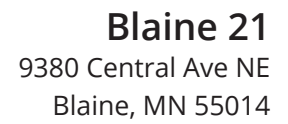
Steve Fischer
612.619.9991
sfischer@arrowcos.com

Contact

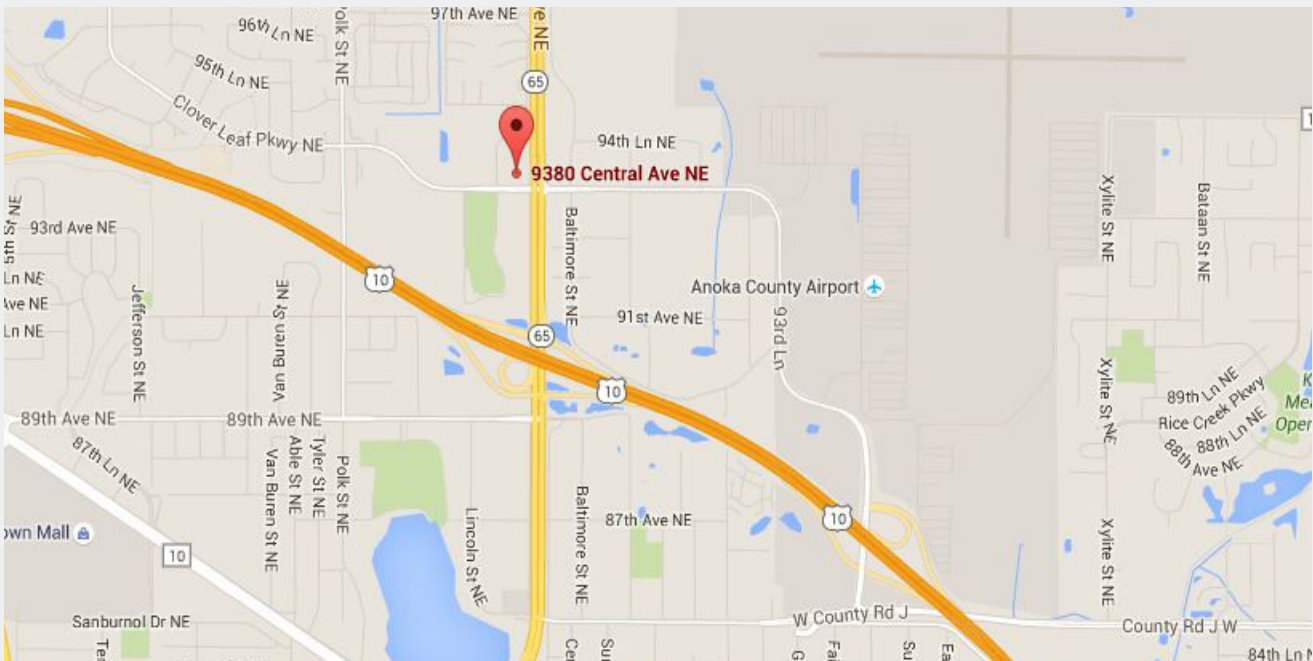
Phone: 763.424.6355
Fax: 763.424.7980

Arrow Companies
7365 Kirkwood Court N. Suite 335
Maple Grove, MN 55369

www.arrowcos.com



FOR LEASE - Beautiful Office Space!



2

FLOOR PLAN

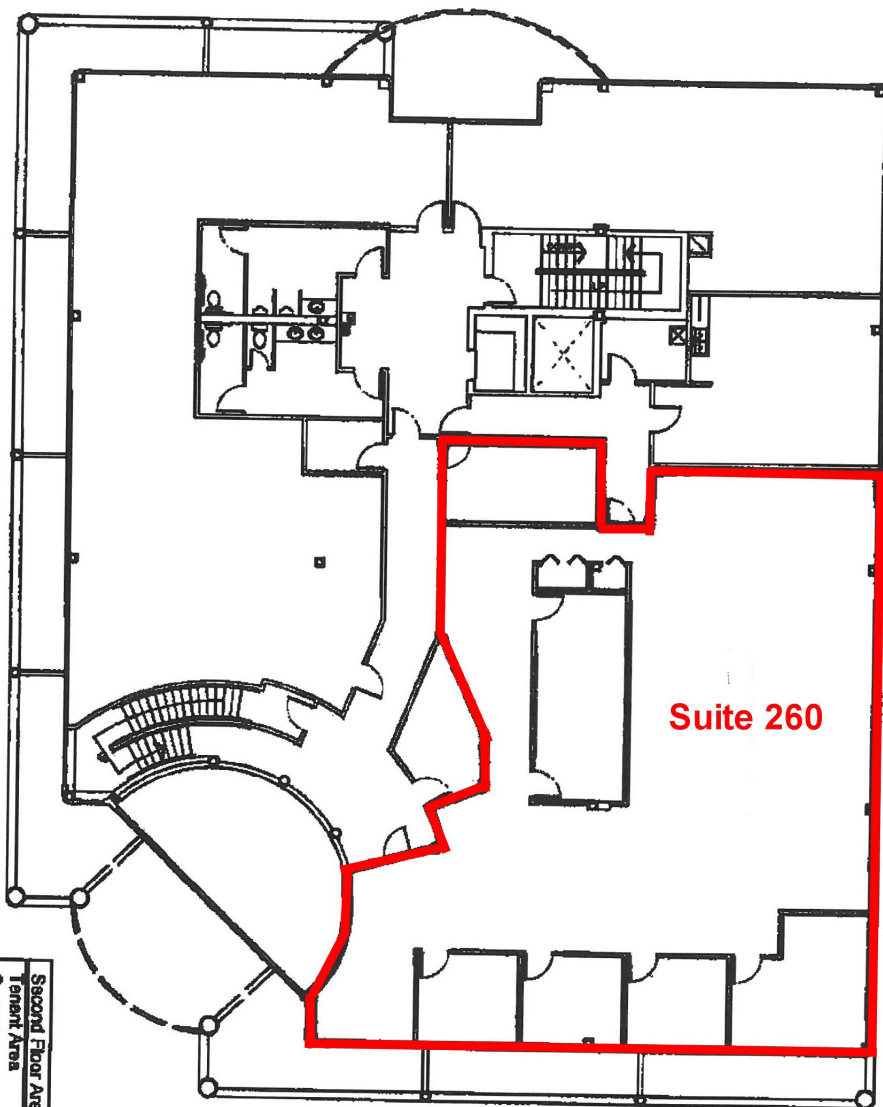
FOR LEASE - Beautiful Office Space!


**The Design
Partnership Ltd.**
111 3rd Avenue N.
Minneapolis, MN 55401
Phone: 612.333.8888
Fax: 612.333.8848

21st Century Bank Building
Second Floor
Blaine, Minnesota

SCALE: 1/16" = 1'-0"
12/07/12

Second Floor Area	
Tenant Area	6,864 sf
Common	2,059 sf
Stair	891 sf
TOTAL AREA	9,814 SF



2ND FLOOR

Contact

Phone: 763.424.6355
Fax: 763.424.7980

Arrow Companies

7365 Kirkwood Court N. Suite 335
Maple Grove, MN 55369

www.arrowcos.com

OUTSIDE GALLERY

FOR LEASE - Beautiful Office Space!



Front View

2015 Population Estimate

1 mile radius	5,674
3 mile radius	66,078
5 mile radius	188,061

2020 Population Projection

1 mile radius	5,871
3 mile radius	68,628
5 mile radius	196,116



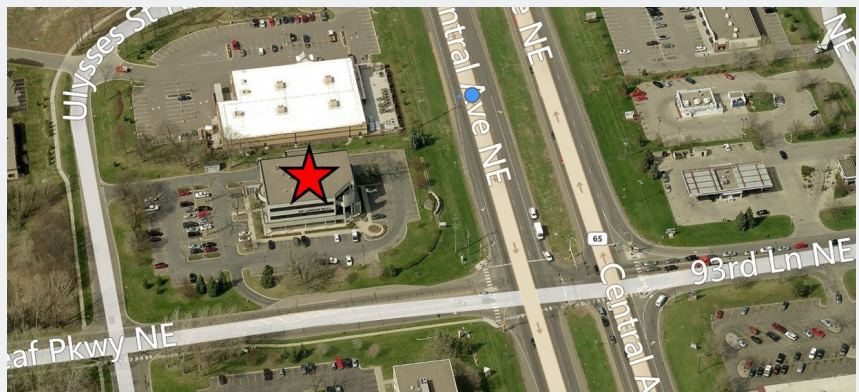
Back Entry



Front of Building

Daily Traffic Report

Hwy 65	49,656
93rd Lane NE	13,272
Clover Leaf Pkwy	7,041



Aerial Shot

Contact

Phone: 763.424.6355
Fax: 763.424.7980

Arrow Companies

7365 Kirkwood Court N. Suite 335
Maple Grove, MN 55369

www.arrowcos.com