



Annapolis Office Park
3350 Annapolis Lane N., Unit B
Plymouth, MN 55447

FOR LEASE - 1,413 SF Office Condo



FEATURES:

- Main Level 1,413 SF Office Condo Available - For Lease.
- Includes 5 offices, reception area, work area & bathrooms (Furniture Included).
- Work area includes range, sink & refrigerator.
- Great location near I-494 & Hwy. 55 in Plymouth, MN.

Gross Rate:

\$2,850 per month

Includes: Cleaning, Tax, Cam, & Utilities



Overview	1
Aerial Maps	2
Floor Plans.....	3
Site Plan.....	4
Photo Gallery	5
City of Plymouth Info.	6



Chad Weeks
612.619.9911
cweeks@arrowcos.com



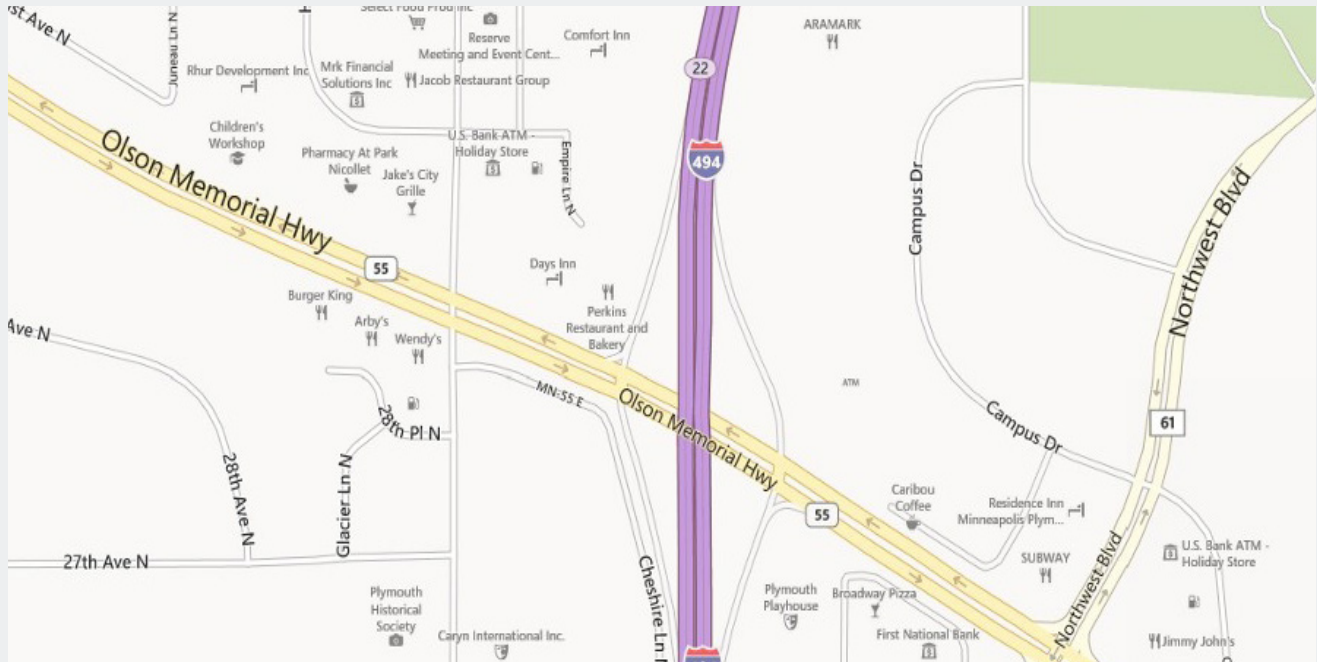
Jeff Penfield
612.325.2067
jpenfield@arrowcos.com

Contact

Phone: 763.424.6355
Fax: 763.424.7980

Arrow Companies
7365 Kirkwood Court N. Suite 335
Maple Grove, MN 55369

www.arrowcos.com



Contact

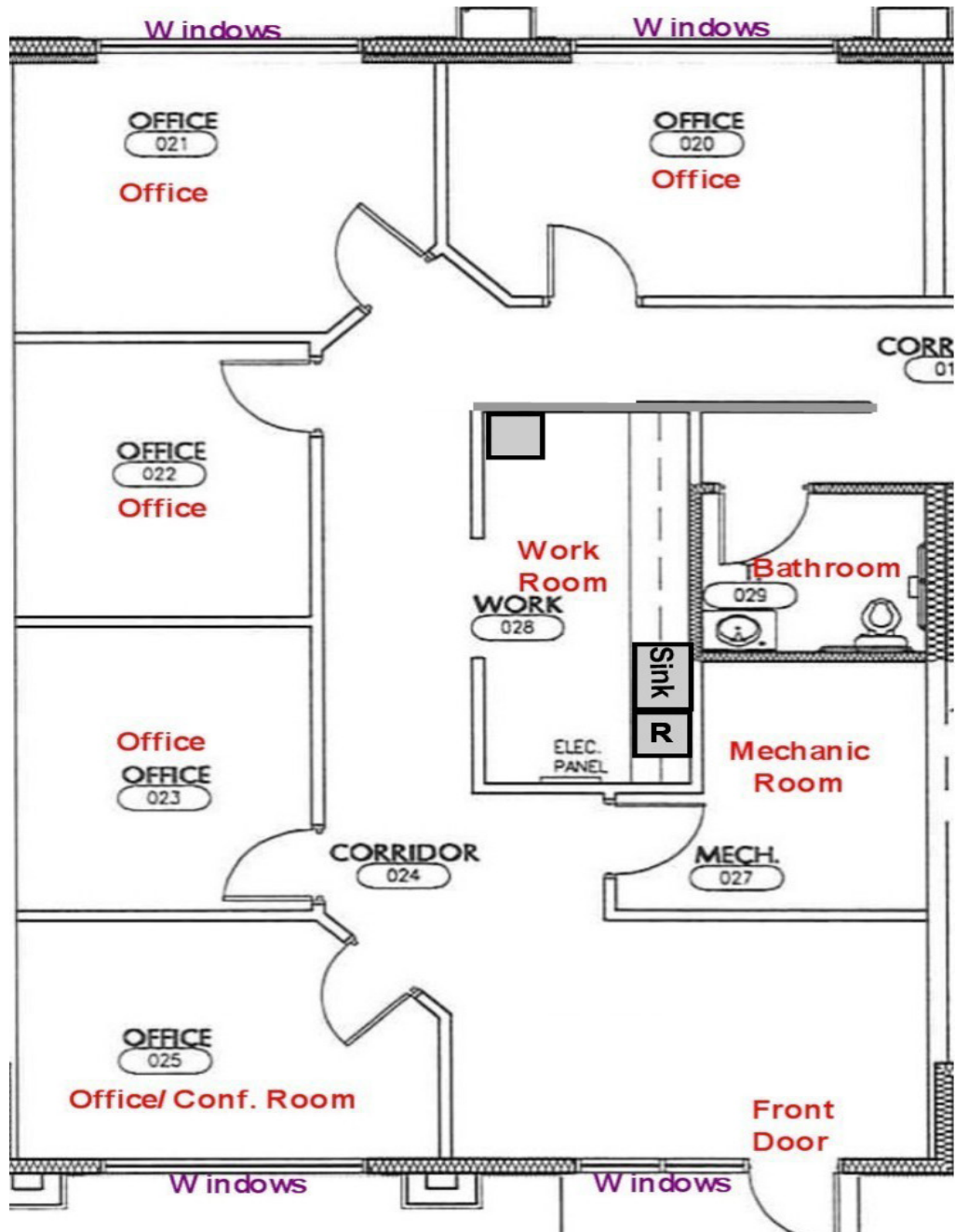
Phone: 763.424.6355
Fax: 763.424.7980

Arrow Companies
7365 Kirkwood Court N. Suite 335
Maple Grove, MN 55369

www.arrowcos.com

FLOOR PLAN

FOR LEASE - 1,413 SF Office Condo



Contact

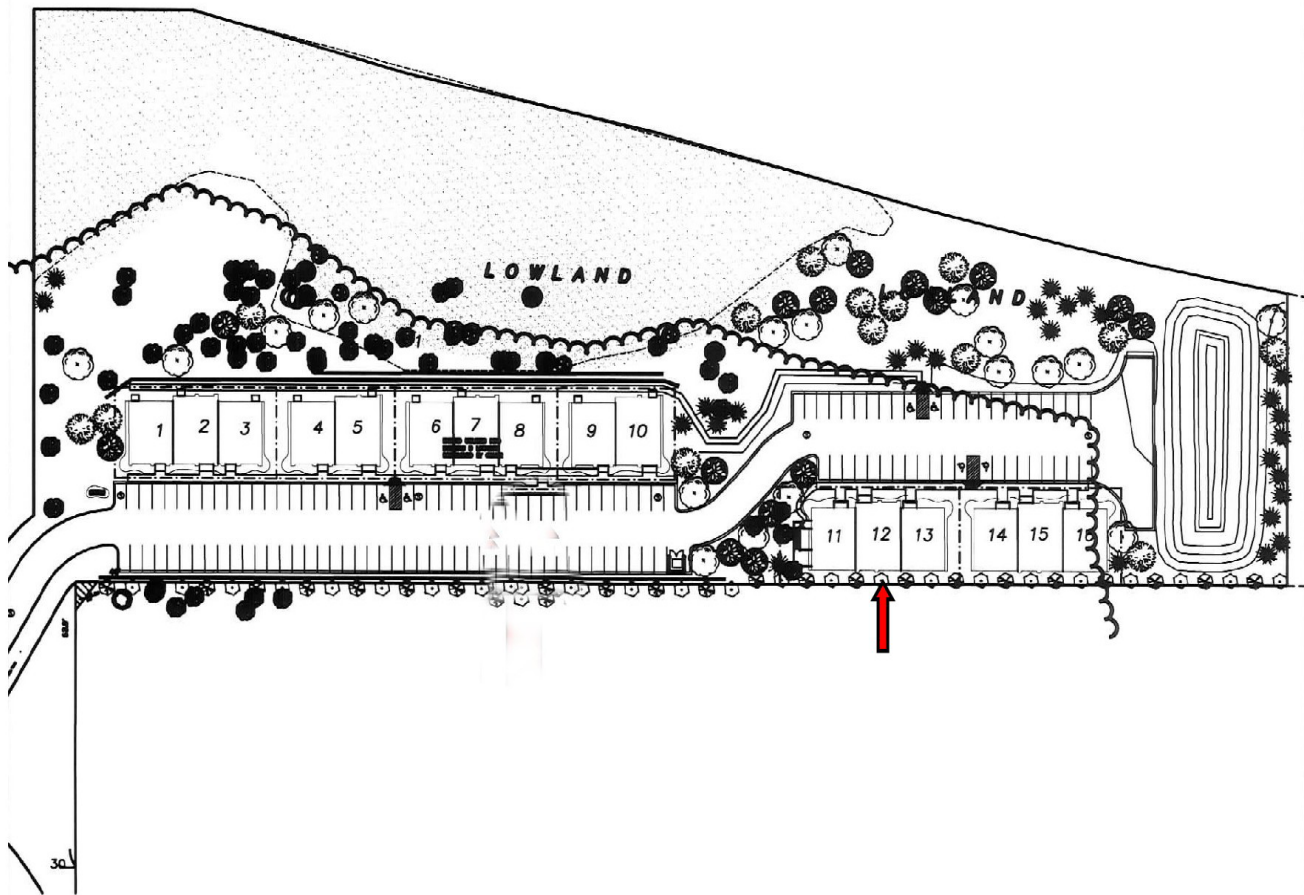
Phone: 763.424.6355
Fax: 763.424.7980

Arrow Companies
7365 Kirkwood Court N. Suite 335
Maple Grove, MN 55369

www.arrowcos.com

SITE PLAN

FOR LEASE - 1,413 SF Office Condo



Contact

Phone: 763.424.6355
Fax: 763.424.7980

Arrow Companies
7365 Kirkwood Court N. Suite 335
Maple Grove, MN 55369

www.arrowcos.com

PHOTO GALLERY

FOR LEASE - 1,413 SF Office Condo



Front Office



Reception Area



Back Office



Reception Area



Work Area



Hallway View

Contact

Phone: 763.424.6355
Fax: 763.424.7980

Arrow Companies
7365 Kirkwood Court N. Suite 335
Maple Grove, MN 55369

www.arrowcos.com



Annapolis Office Park
3350 Annapolis Lane N., Unit B
Plymouth, MN 55447

CITY OF PLYMOUTH

FOR LEASE - 1,413 SF Office Condo

Plymouth is home to a vibrant business community. From small start up companies to major corporations, you will find them in Plymouth. Our diverse economic base includes nearly 50,000 jobs. Major industries include insurance, high tech research, medical devices and light manufacturing as well as printing and publishing.

Nationally recognized for its quality of life, Plymouth is located 12 miles northwest of Minneapolis. It offers:

Extensive trails and parks

Picturesque open spaces

Strong neighborhoods

Diverse recreation programs

Highly regarded school districts

A variety of local businesses

Nearby shopping and entertainment districts

Easy access to downtown Minneapolis and its wide array of cultural and sports venues.

Best Place to Live

Plymouth was named Money magazine's number one Best Place to Live in 2008 for cities with populations of 50,000 to 300,000. The city stayed in the top dozen when the magazine repeated the rankings in 2010.

Location, Location, Location

Many major highways run through or are close to Plymouth, making it readily accessible to all within the metropolitan area. Interstate 494 runs through Plymouth as does Hwy. 55. Hwy. 169 is on the city's eastern border and I-394 is within four miles from the center of Plymouth.



Contact

Phone: 763.424.6355

Fax: 763.424.7980

Arrow Companies

7365 Kirkwood Court N. Suite 335

Maple Grove, MN 55369

www.arrowcos.com