

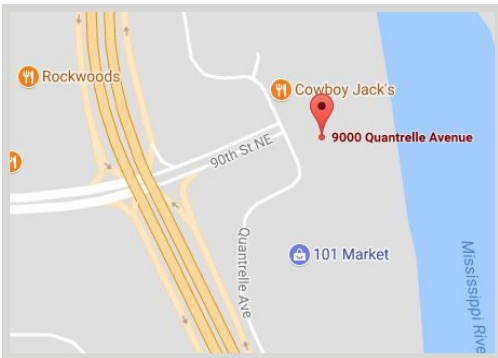
Private Office FOR LEASE
Suite 210 - Approx. 10' x 15'



FEATURES:

- 32,224 SF Office building with Class A finishes built in 2015
- Suite 210 - (Private Office Approx. 10' x 15')
Available FOR LEASE in Otsego, MN
- Well maintained building along the Mississippi River
- Great visibility on Hwy 101 with approximately 52,700 vehicles per day!

Lease Rate
\$450/month



AVAILABILITY:

- ▲ Suite 210 - Available 04.01.2022
- Approx. 10' x 15'
- Private Office
- Sink/Running Water in space

Overview 1
 Aerial Maps 2
 Floor Plan 3
 Site Plan 4
 Photo Gallery 5-6




Steve Fischer
 612.619.9991
 sfischer@arrowcos.com



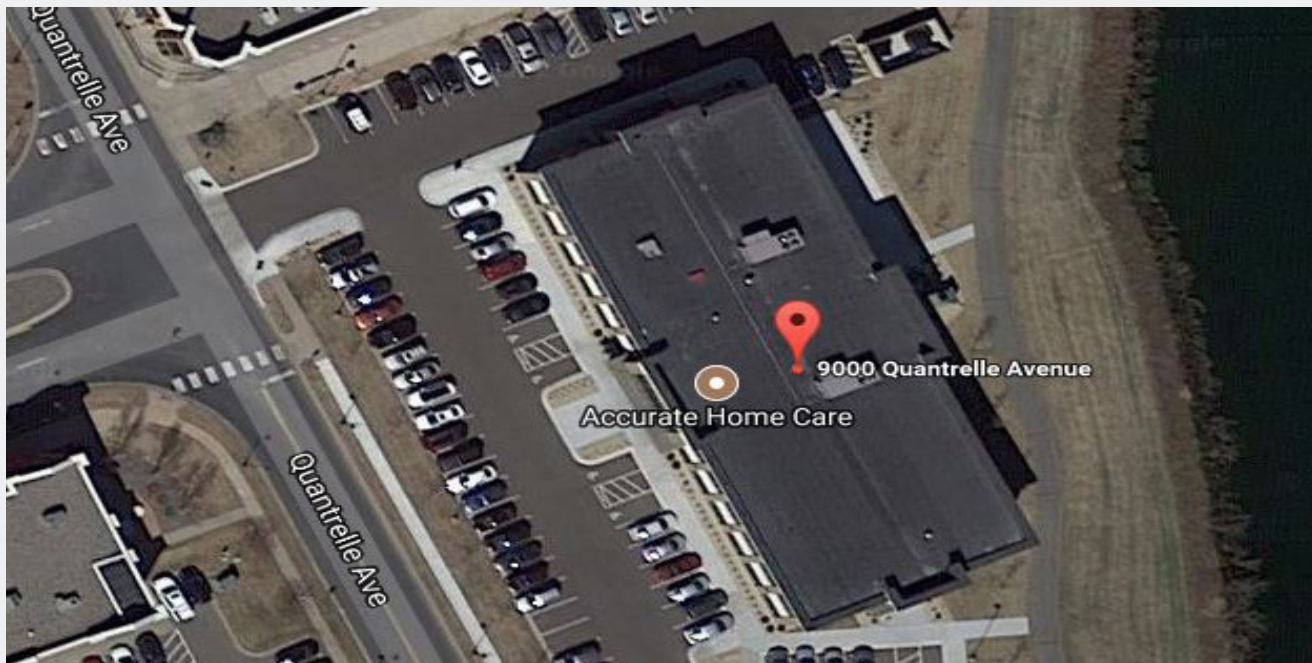
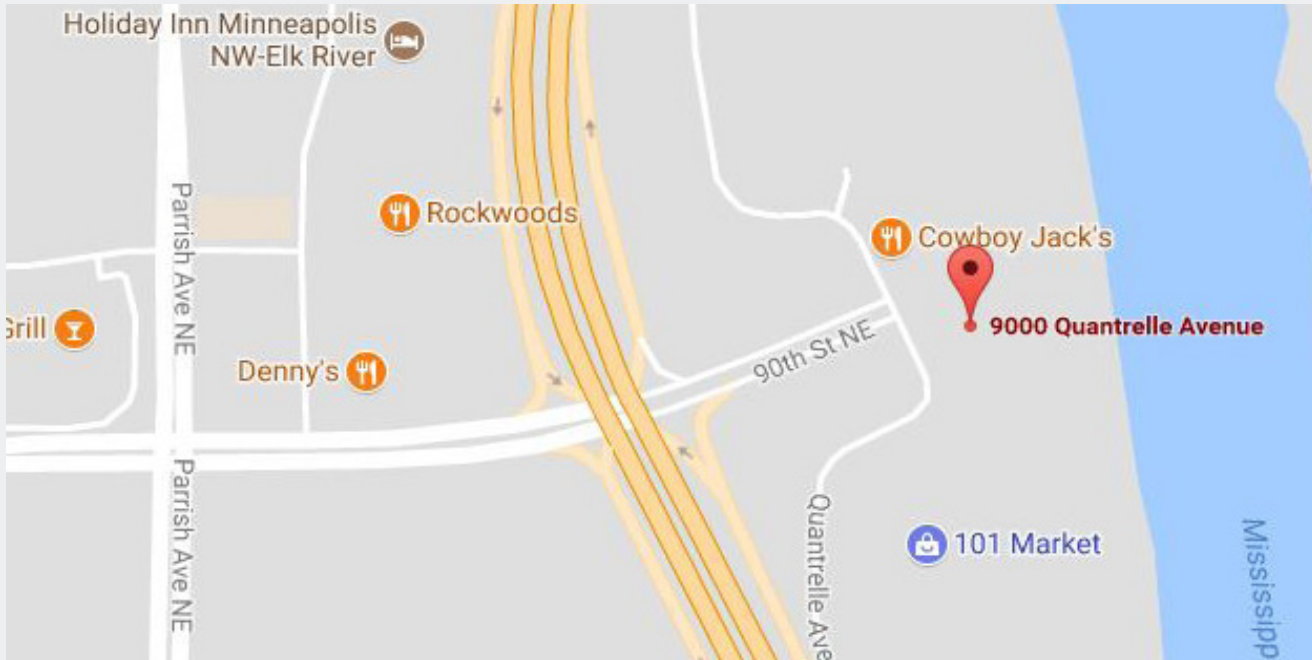

Chad Weeks
 612.619.9911
 cweeks@arrowcos.com

Contact
 Phone: 763.424.6355
 Fax: 763.424.7980
Arrow Companies
 7365 Kirkwood Court N. Suite 335
 Maple Grove, MN 55369

www.arrowcos.com

AERIAL & MAP

Private Office FOR LEASE
Suite 210 - Approx. 10' x 15'



Contact

Phone: 763.424.6355

Fax: 763.424.7980

Arrow Companies

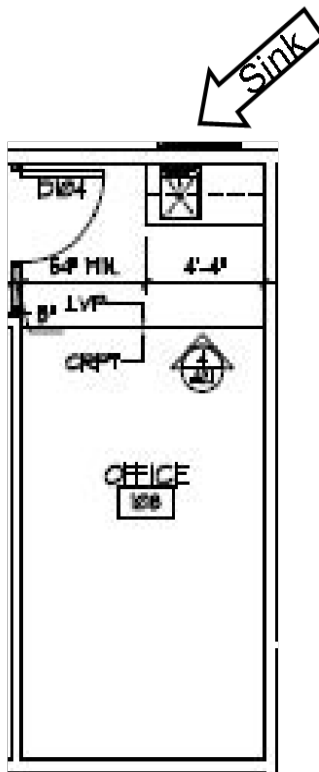
7365 Kirkwood Court N. Suite 335

Maple Grove, MN 55369

www.arrowcos.com

FLOOR PLAN

Private Office FOR LEASE
Suite 210 - Approx. 10' x 15'



Approx. 10' x 15'

Contact

Phone: 763.424.6355
Fax: 763.424.7980

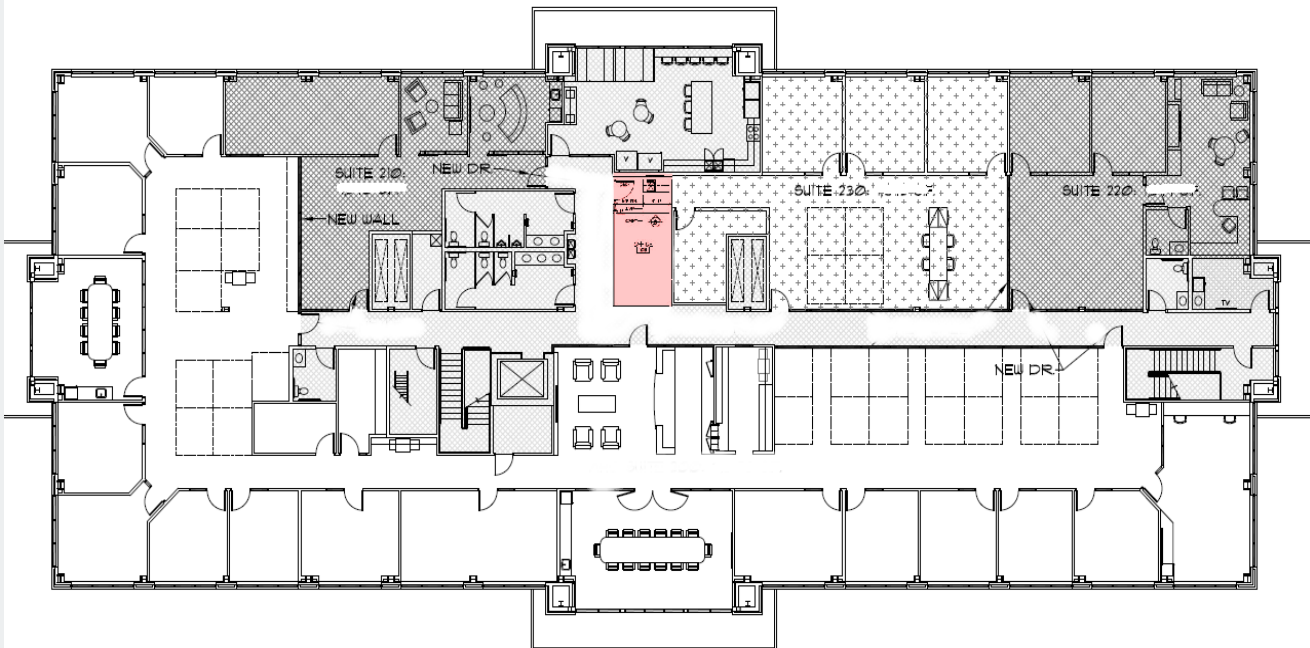
Arrow Companies

7365 Kirkwood Court N. Suite 335
Maple Grove, MN 55369

www.arrowcos.com

SITE PLAN

Private Office FOR LEASE
Suite 210 - Approx. 10' x 15'



Contact

Phone: 763.424.6355

Fax: 763.424.7980

Arrow Companies

7365 Kirkwood Court N. Suite 335

Maple Grove, MN 55369

www.arrowcos.com

PHOTO GALLERY

**Private Office FOR LEASE
Suite 210 - Approx. 10' x 15'**



Shared Break Room



Shared Restrooms



Monument Signage



Lobby

Contact

Phone: 763.424.6355

Fax: 763.424.7980

Arrow Companies

7365 Kirkwood Court N. Suite 335

Maple Grove, MN 55369

PHOTO GALLERY

Private Office FOR LEASE
Suite 210 - Approx. 10' x 15'



Contact

Phone: 763.424.6355

Fax: 763.424.7980

Arrow Companies

7365 Kirkwood Court N. Suite 335

Maple Grove, MN 55369

www.arrowcos.com