



Weaver Lake Office Park

11272 86th Ave N., Suite B

Maple Grove, MN 55369

FOR LEASE
+/- 1,800 SF Office Space



FEATURES:

- 1,800 SF Lower Level office space available.
- Space includes 4+ Offices, Kitchenette, bathroom and open area.
- Includes use of all furniture!
- Walkout area to quiet & scenic pond / nature area
- Perfect space for any accountant, attorney or any other professional service company.

Lease Rate
\$15.00/psf NNN
Tax: \$4.67 / psf & Cam: \$2.03 / psf



FACTS:


- ▲ Convenient Location off Zachery Lane & Weaver Lake Rd minutes away from 694
- ▲ Many restaurants & retail in close proximity
- ▲ Reserved Client parking in front of building

Overview 1
 Aerial Maps 2
 Floor Plan 3
 Photo Gallery 4
 City Info 5




Chad Weeks
 612.619.9911
 cweeks@arrowcos.com




Jeff Penfield
 612.325.2067
 jpenfield@arrowcos.com

Contact
 Phone: 763.424.6355
 Fax: 763.424.7980
Arrow Companies
 7365 Kirkwood Court N. Suite 335
 Maple Grove, MN 55369

www.arrowcos.com



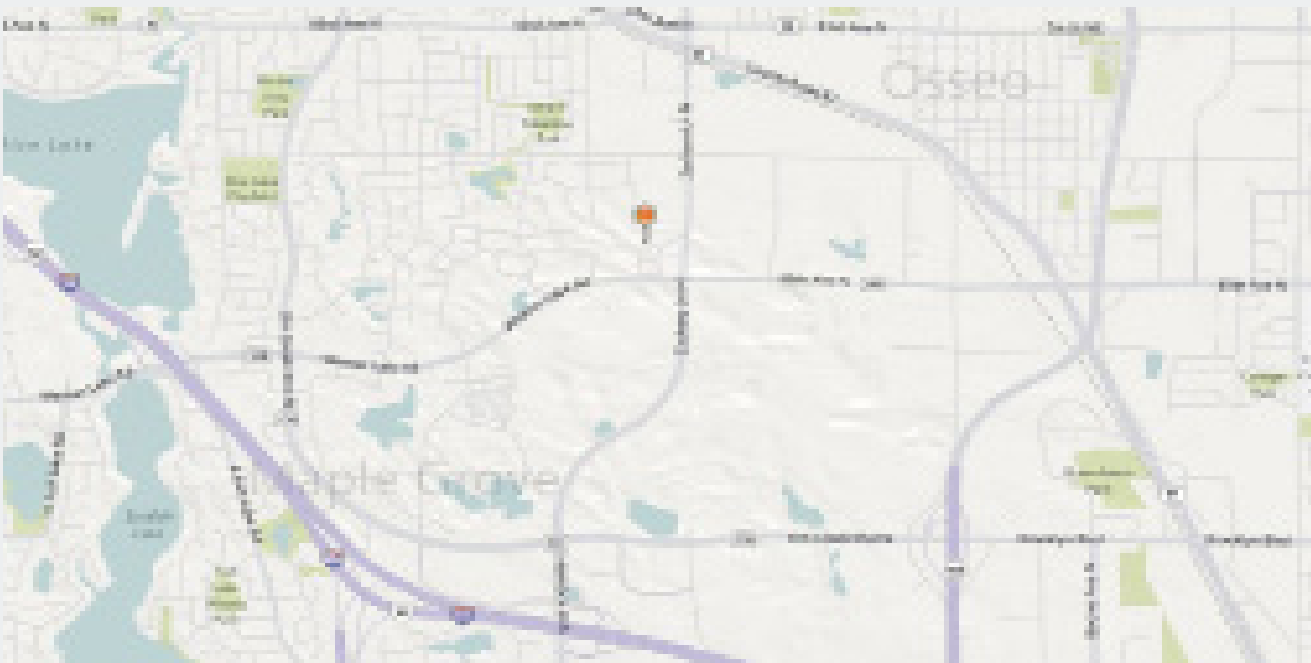
Weaver Lake Office Park

11272 86th Ave N., Suite B

Maple Grove, MN 55369

AERIAL & MAP

FOR LEASE
+/- 1,800 SF Office Space



Contact

Phone: 763.424.6355

Fax: 763.424.7980

Arrow Companies

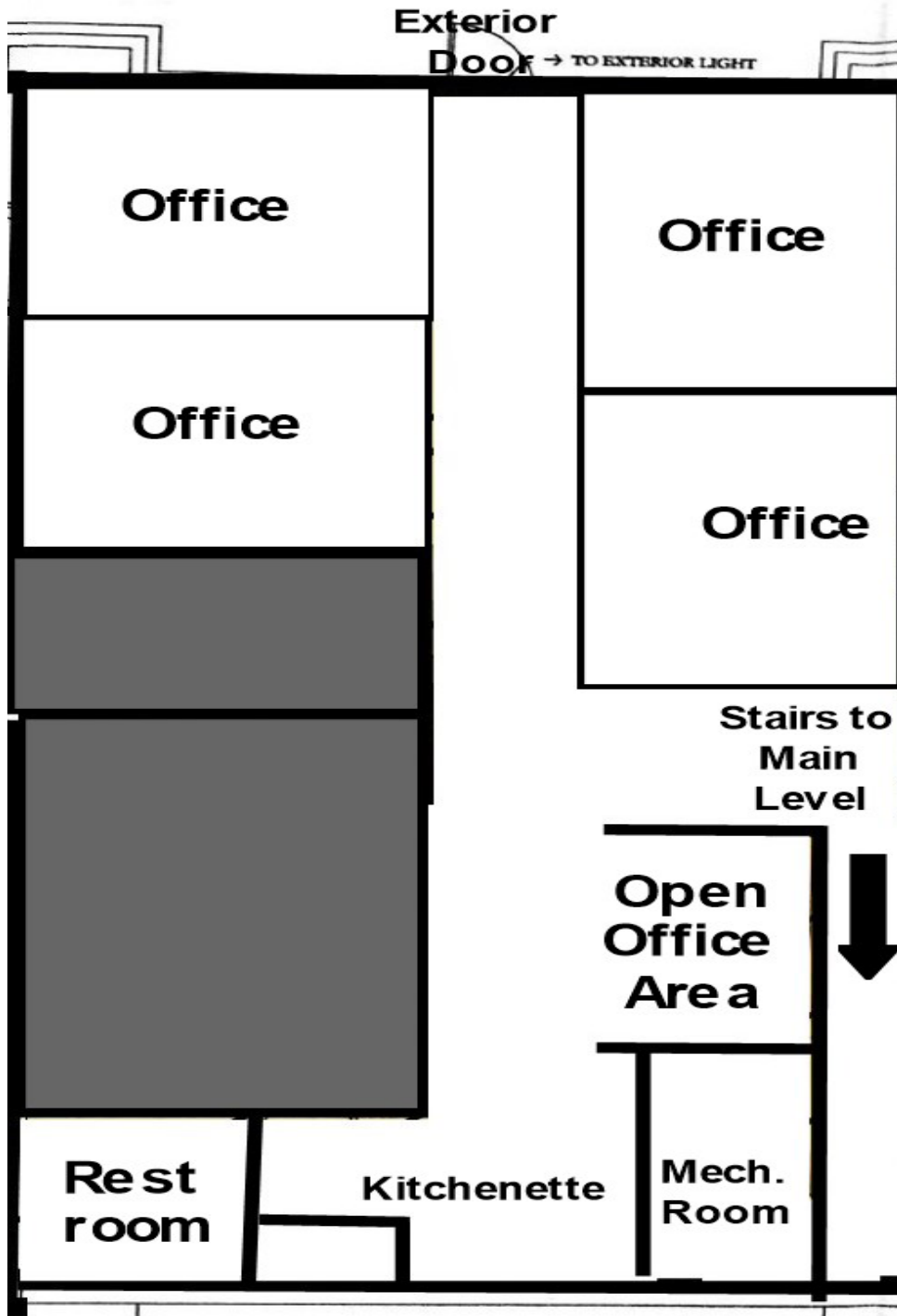
7365 Kirkwood Court N. Suite 335

Maple Grove, MN 55369

www.arrowcos.com

FLOOR PLAN

FOR LEASE
+/- 1,800 SF Office Space





Weaver Lake Office Park

11272 86th Ave N., Suite B

Maple Grove, MN 55369

OTHER INFO

FOR LEASE
+/- 1,800 SF Office Space

<p>POPULATION (5 MILE RADIUS)</p>	<p>2010 Census - 162,868 2023 (Estimate) - 185,569 2028 (Projection) - 187,734</p>
<p>AVERAGE HOUSEHOLD INCOME</p>	<p>2019 (Estimate) - \$115,946</p>
<p>TRAFFIC</p>	<p>Zachary Lane - 14,533 vehicles per day 85th Ave N. - 12,584 vehicles per day</p>
<p>CITY OF MAPLE GROVE</p>	<p>Maple Grove is a flourishing community in the Twin Cities metro area that over 61,000 residents proudly call home. Just twenty minutes from Minneapolis and forty-five minutes from the Minneapolis/St. Paul International Airport, citizens receive every amenity of a large city and the peace and charm of a small town.</p> <p>Set within the heart of Hennepin County, Maple Grove's vibrant history dates back to the mid 1800s when the Winnebago Indians were settled in the area. Today, over 1,000 businesses operate in this progressive city which offers people quality health-care, year-round recreational activities, and an excellent standard of living.</p> <p>Rated high by citizens as a great place to raise children, Maple Grove offers plenty of opportunities for residents to live life to the fullest. Looking for something to do with the family? Look no further than the Maple Grove Community Center which has indoor/outdoor play-grounds, ice skating, indoor/outdoor pools, and picnic area. It is also the site of the Maple Grove Farmers Market where fresh food and fun are in abundance. Check out the many community concerts and family activities at the Town Green. Don't miss the annual Maple Grove Days festivities in July and numerous community events sponsored by local businesses and community organizations.</p> <p>=Maple Grove is also a great place for commerce and has a solid business community in which a number of highly regarded businesses continue to thrive.</p> <p>Maple Grove has a wide range of housing options available; from rental to charming single family homes to townhouses with scenic views to exciting senior living communities and everything in between. Most of the developments come complete with play areas which are perfect for those with families or looking to start a family. Subdivisions are also within close proximity to multiple shopping and dining options so convenience is something that's around every corner.</p>

Contact

Phone: 763.424.6355

Fax: 763.424.7980

Arrow Companies

7365 Kirkwood Court N. Suite 335

Maple Grove, MN 55369

www.arrowcos.com