



Weaver Lake Office Park

11290 86th Ave N
Maple Grove, MN 55369

**FOR LEASE
1,700 SF AVAILABLE**



FEATURES:

- Lower Level End Cap 1,700 SF Office Space Available - FOR LEASE.
- Includes 5 private offices, recept. desk, kitchenette, restroom & lobby area.
- Unique office condo with abundant amount of window & light.
- High end upgrades throughout including wood floors & crown molding.
- Great location near I-94 & Hemlock in Maple Grove, MN.

Lease Rate:
\$16.50 / psf NNN
 Tax - \$3.67 / psf
 Cam - \$2.36 / psf
 Utilities & Cleaning Billed Separately

Overview 1
 Aerial Maps / Site Plan 2-3
 Floor Plans 4
 Photo Gallery 5



Chad Weeks
 612.619.9911
 cweeks@arrowcos.com



Jeff Penfield
 612.325.2067
 jpenfield@arrowcos.com

Contact

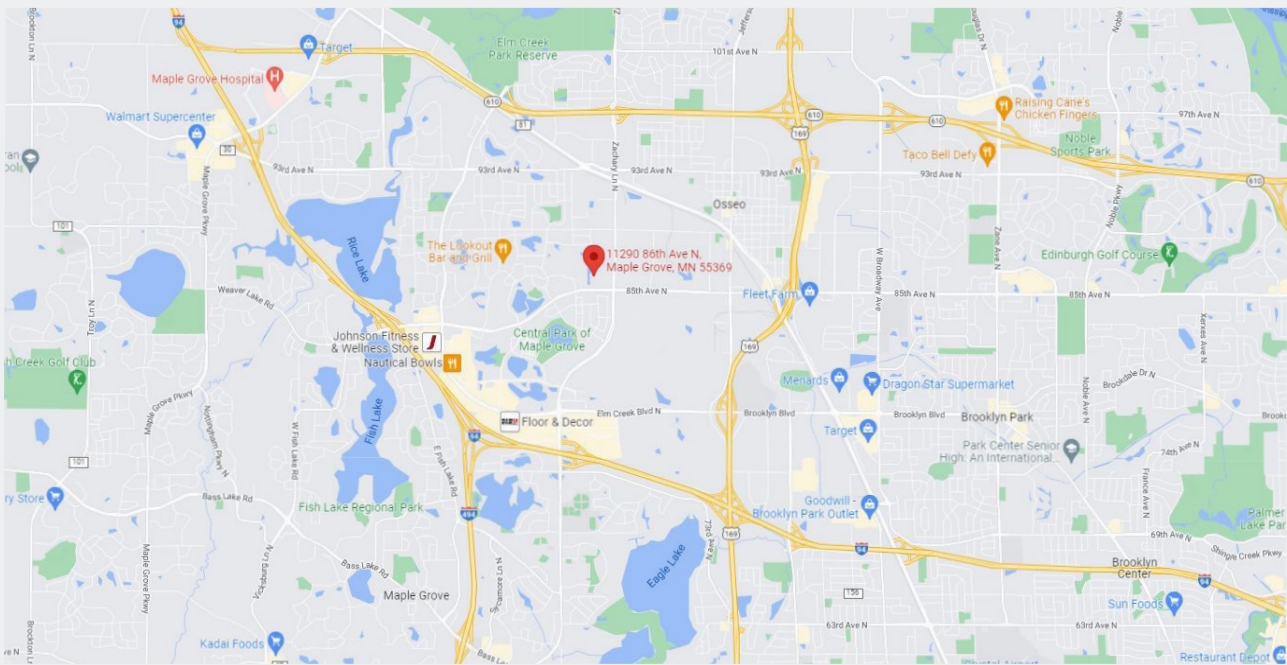
Phone: 763.424.6355
 Fax: 763.424.7980

Arrow Companies
 7365 Kirkwood Court N. Suite 335
 Maple Grove, MN 55369

www.arrowcos.com

AERIAL & MAP

FOR LEASE
1,700 SF AVAILABLE



SITE PLAN

FOR LEASE
1,700 SF AVAILABLE



Contact

Phone: 763.424.6355
Fax: 763.424.7980

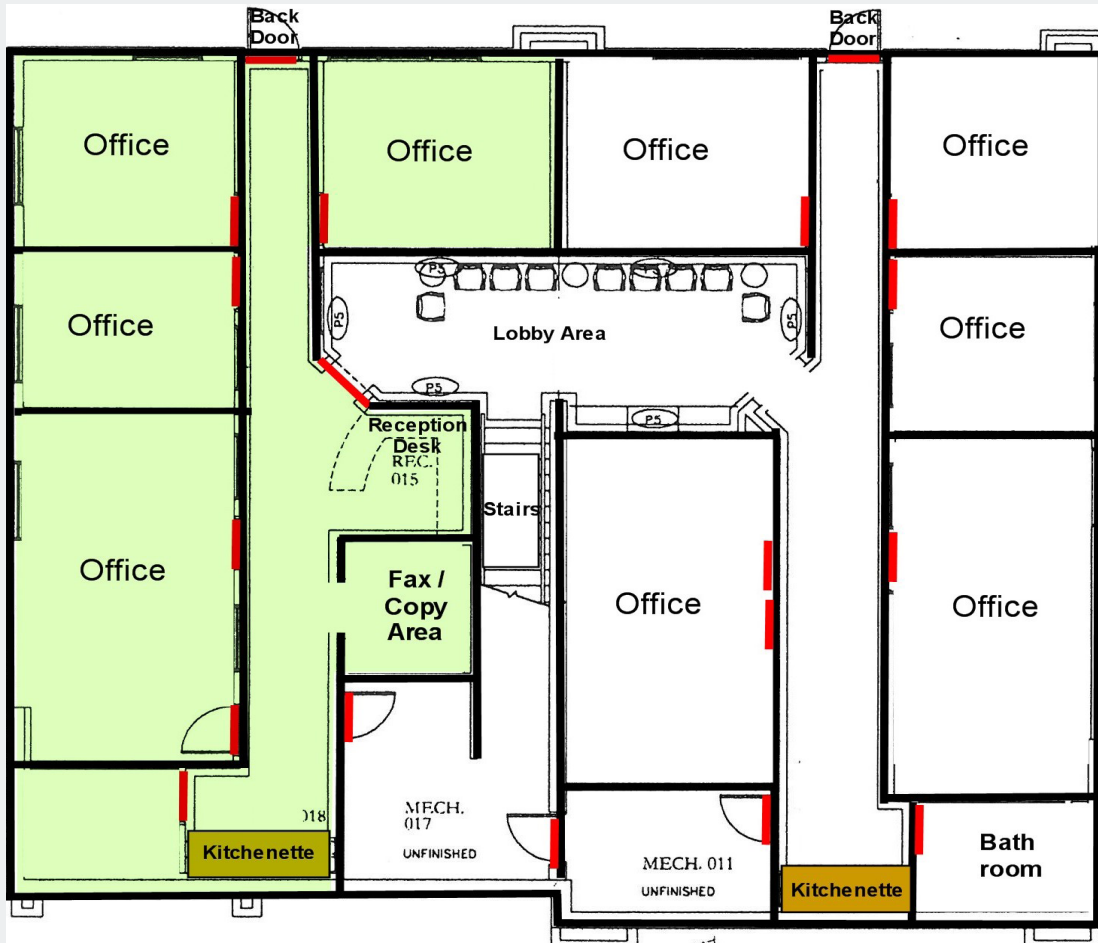
Arrow Companies

7365 Kirkwood Court N. Suite 335
Maple Grove, MN 55369

www.arrowcos.com

FLOOR PLAN

FOR LEASE
1,700 SF AVAILABLE



LOWER LEVEL

Contact

Phone: 763.424.6355

Fax: 763.424.7980

Arrow Companies

7365 Kirkwood Court N. Suite 335

Maple Grove, MN 55369

www.arrowcos.com

PHOTO GALLERY

FOR LEASE
1,700 SF AVAILABLE



Office



Office



Office



Office



Kitchenette



Work / Copy Room

Contact

Phone: 763.424.6355

Fax: 763.424.7980

Arrow Companies

7365 Kirkwood Court N. Suite 335

Maple Grove, MN 55369

www.arrowcos.com