

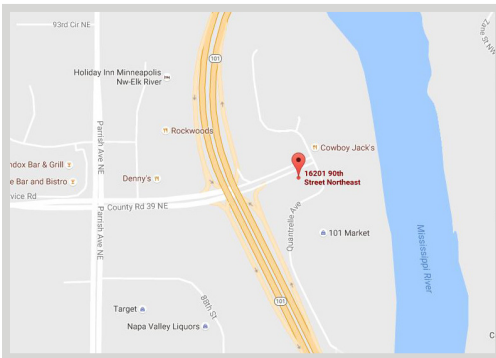
**FOR LEASE**  
**EXECUTIVE SUITES & 1,990 SF AVAILABLE**



**FEATURES:**

- Second floor office space available (Executive Suites & 1,990 SF)
- Convenient location off Hwy 101 in Otsego
- Anchor tenant: Keller Williams Realty
- Walking trails located along the Mississippi River
- Located in the vastly growing city of Otsego

Lease Rate  
**\$16.00/PSF**  
Tax & Cam \$9.18/psf



**FACTS:**

- ▲ 5 private offices and conference room
- ▲ Reception and waiting area
- ▲ Breakroom
- ▲ Shared restrooms
- ▲ Executive Suites include Wi-Fi

Overview ..... 1  
Aerial Maps ..... 2  
Floor Plan ..... 3  
Photo Gallery ..... 4



**Steve Fischer**  
612.619.9991  
sfischer@arrowcos.com



**Chad Weeks**  
612.619.9911  
cweeks@arrowcos.com

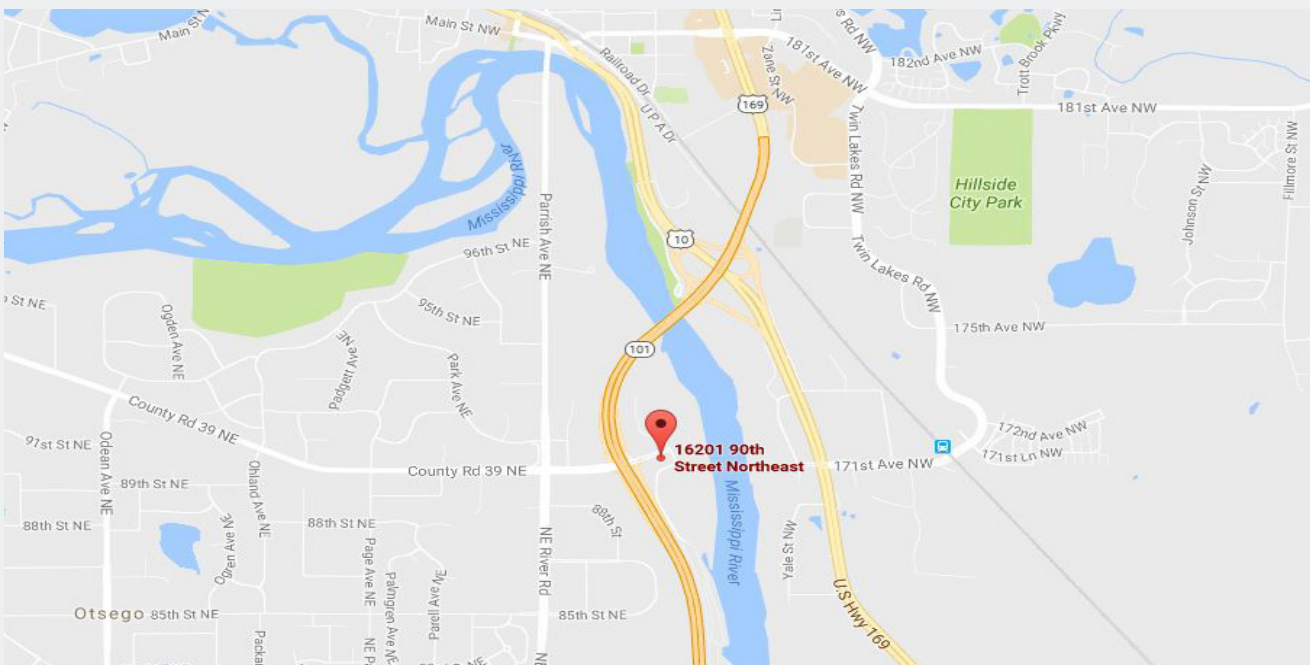
**Contact**

Phone: 763.424.6355  
Fax: 763.424.7980

**Arrow Companies**  
7365 Kirkwood Court N. Suite 335  
Maple Grove, MN 55369

**AERIAL & MAP**

**FOR LEASE**  
**EXECUTIVE SUITES & 1,990 SF AVAILABLE**



**Contact**

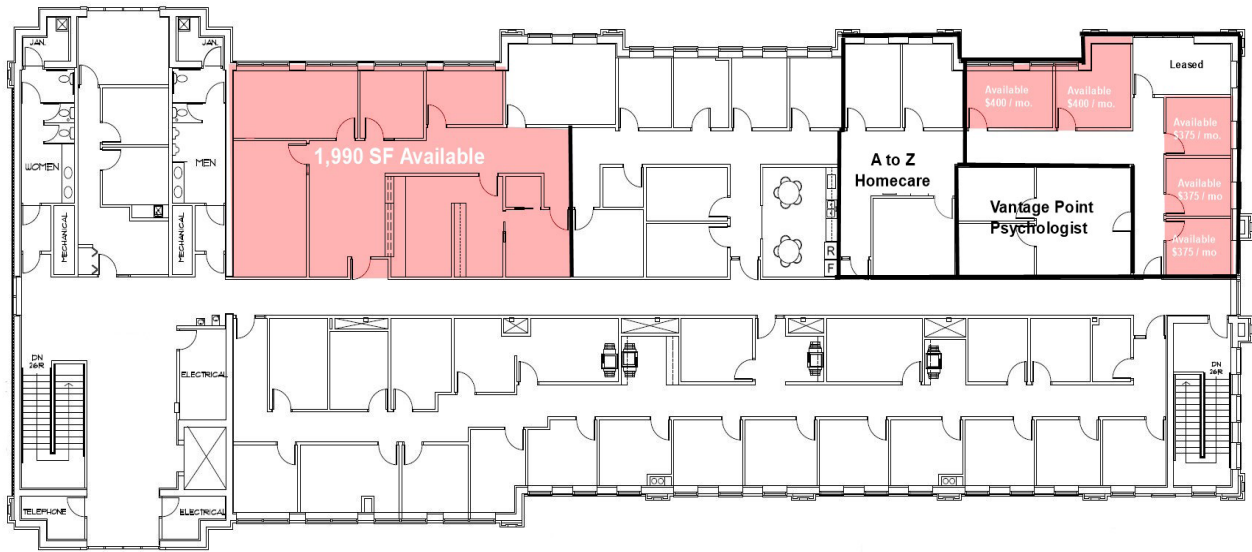
Phone: 763.424.6355  
Fax: 763.424.7980

**Arrow Companies**

7365 Kirkwood Court N. Suite 335  
Maple Grove, MN 55369

**FLOOR PLAN**

**FOR LEASE**  
**EXECUTIVE SUITES & 1,990 SF AVAILABLE**



**SECOND FLOOR**

**Contact**

Phone: 763.424.6355

Fax: 763.424.7980

**Arrow Companies**

7365 Kirkwood Court N. Suite 335

Maple Grove, MN 55369

[www.arrowcos.com](http://www.arrowcos.com)

## PHOTO GALLERY

**FOR LEASE**  
**EXECUTIVE SUITES & 1,990 SF AVAILABLE**



Front of Building



Back of Building

### Contact

Phone: 763.424.6355

Fax: 763.424.7980

### Arrow Companies

7365 Kirkwood Court N. Suite 335

Maple Grove, MN 55369

[www.arrowcos.com](http://www.arrowcos.com)