



# Harbor Point Office Park

2085 County Road D, Unit 200

Maplewood, MN 55109

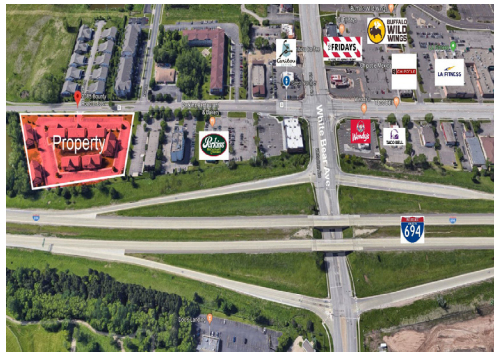
**FOR LEASE**  
**1,040 SF Office Space**



### FEATURES:

- 1,040 SF Upper Level office space "For Lease" in Maplewood, MN.
- Includes 3 offices with windows, open office area & Kitchenette.
- Great exposure off County Road D with signage.
- Convenient location off 694 & White Bear Lake Ave.

**Lease Rate:**  
**\$19.00 / psf Gross**



- Overview ..... 1
- Aerial Maps ..... 2
- Site Plan ..... 3
- Floor Plans ..... 4
- Photo Gallery ..... 5
- City of Plymouth Info. .... 6



**Chad Weeks**  
612.619.9911  
cweeks@arrowcos.com



**Jeff Penfield**  
612.325.2067  
jpenfield@arrowcos.com

### Contact

Phone: 763.424.6355  
Fax: 763.424.7980

**Arrow Companies**  
7365 Kirkwood Court N. Suite 335  
Maple Grove, MN 55369

[www.arrowcos.com](http://www.arrowcos.com)



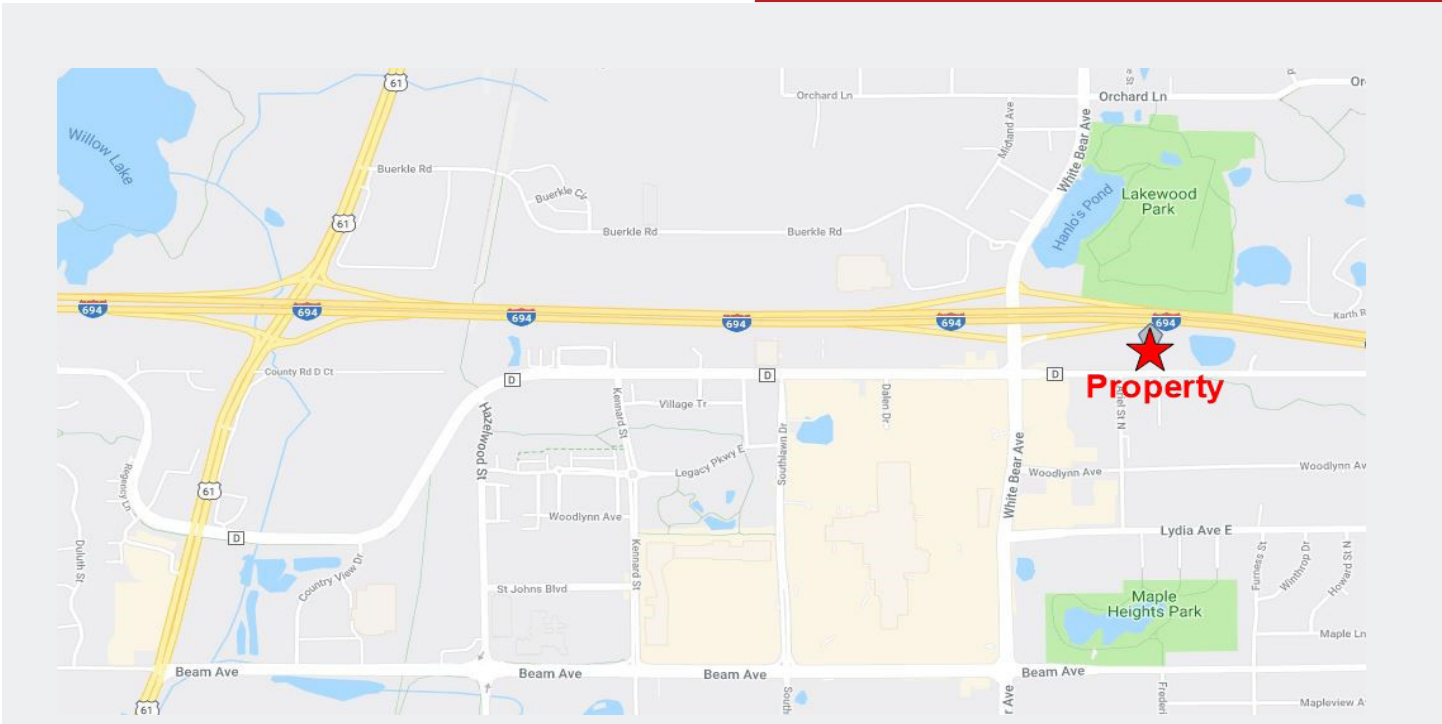
# Harbor Point Office Park

2085 County Road D, Unit 200

Maplewood, MN 55109

## AERIAL & MAP

**FOR LEASE**  
**1,040 SF Office Space**



### Contact

Phone: 763.424.6355

Fax: 763.424.7980

### Arrow Companies

7365 Kirkwood Court N. Suite 335

Maple Grove, MN 55369

[www.arrowcos.com](http://www.arrowcos.com)



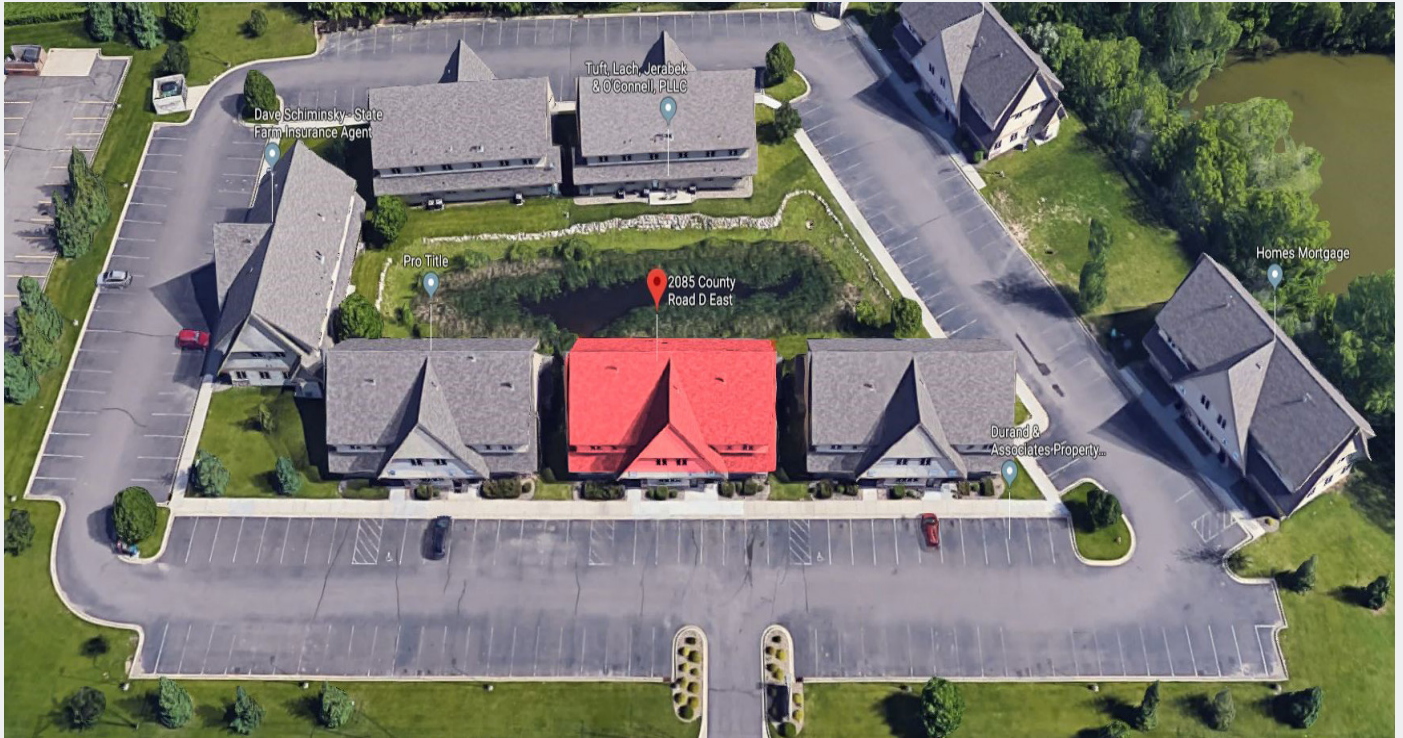
# Harbor Point Office Park

2085 County Road D, Unit 200

Maplewood, MN 55109

## SITE PLAN

**FOR LEASE**  
**1,040 SF Office Space**



### Contact

Phone: 763.424.6355

Fax: 763.424.7980

### Arrow Companies

7365 Kirkwood Court N. Suite 335

Maple Grove, MN 55369

[www.arrowcos.com](http://www.arrowcos.com)

**FLOOR PLAN**

**FOR LEASE**  
**1,040 SF Office Space**



**PHOTO GALLERY**

**FOR LEASE**  
**1,040 SF Office Space**



Open Area View



View from Kitchen Area



Office



Office



Kitchen Area



Front View

**Contact**

Phone: 763.424.6355

Fax: 763.424.7980

**Arrow Companies**

7365 Kirkwood Court N. Suite 335

Maple Grove, MN 55369

[www.arrowcos.com](http://www.arrowcos.com)



## Harbor Point Office Park

2085 County Road D, Unit 200

Maplewood, MN 55109

**CITY OF MAPLEWOOD**

**FOR LEASE**  
**1,040 SF Office Space**

Maplewood provides its citizens a sense of community. The city is filled with a combination of lush wooded areas, lakes, ponds, beautiful parks and trails as well as nice residential areas and well planned commercial and industrial areas.

Maplewood, Minnesota is a suburb of more than 36,000 people in the Twin Cities metropolitan area located about 15 minutes from downtown Saint Paul. Maplewood has more than 30 parks and a great trail system. The City also has its own Department of Motor Vehicles as well as its own Police Department and Fire Department. Maplewood has strong schools and a variety of recreational opportunities that add to its quality of life. As a diverse and growing community, the City welcomes potential residents, business owners, and visitors.



### Contact

Phone: 763.424.6355

Fax: 763.424.7980

### Arrow Companies

7365 Kirkwood Court N. Suite 335

Maple Grove, MN 55369

[www.arrowcos.com](http://www.arrowcos.com)